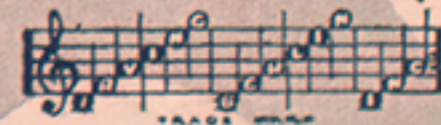


# WHEN YOU WALKED OUT SOMEONE ELSE WALKED RIGHT IN



MADE  
IN  
USA



WORDS AND MUSIC  
BY  
IRVING BERLIN

Irving Berlin, Inc.  
MUSIC PUBLISHERS  
1607 Broadway New York

perret



# When You Walked Out Someone Else Walked Right In

Words and Music  
By IRVING BERLIN

Moderato

The piano introduction consists of three staves. The top staff is a treble clef with a key signature of one sharp (F#) and a common time signature (C). The middle and bottom staves are grand staff notation. The music begins with a forte (f) dynamic and features a rhythmic pattern of eighth and sixteenth notes in the right hand, and a steady bass line in the left hand.

VOICE

The first line of the song features a voice line and piano accompaniment. The voice line is on a treble clef staff with lyrics: "My hon - ey / A hap - py". The piano accompaniment is on a grand staff. A "Vamp" section is indicated above the piano staff, and the dynamic is marked as mezzo-forte (mf).

The second line of the song features a voice line and piano accompaniment. The voice line is on a treble clef staff with lyrics: "do you re-mem-ber 'twas a De-cem-ber day, I said that / cou-ple were we two while you were sweet to me, But now I'm". The piano accompaniment is on a grand staff. The dynamic is marked as piano (p).



you would re-pent the day that you went a - way \_\_\_\_\_ You turned as  
 send-ing bad news to my lit - tle used to be \_\_\_\_\_ You thought the

red as a ru - by much too good to be true \_\_\_\_\_ You thought I'd  
 min-ute you'd shake me that it would make me blue \_\_\_\_\_ And I would

sit a - round lone-ly think - ing of on - ly you lit - tle you knew that  
 sit a - round lone-ly think - ing of on - ly you lit - tle you knew that



## CHORUS

When you walked out — some-one else — walked right in —

*p-f*

Some-one with good news — stepped right in your shoes —

Some-bod-y else — took your place — on my knee — An-oth-er

sweet-ie in clov-er fuss-in' all o-ver me — I saw that

you grew so cold — love, so what could I do —

off with the old — love and on with the new —

When you walked out — hon - ey I just had to grin —

You left the door wide o - pen and some-bod-y else\_ walked in. in.