



3 1761 04875 8940

NOVELLO EWER & CO'S

MUSIC PRIMERS

DOUBLE SCALLES

BY

FRANKLIN & FAULOX

MT
231
T28

71.6
I 244

NOVELLO, EWER AND CO.'S MUSIC PRIMERS

EDITED BY DR. STAINER.

DOUBLE SCALES

SYSTEMATICALLY FINGERED

A SUPPLEMENT TO ALL EXISTING PIANOFORTE SCHOOLS

BY

FRANKLIN TAYLOR.



PRICE ONE SHILLING.

91
22. 9. 43

LONDON AND NEW YORK: NOVELLO, EWER AND CO.

DOUBLE SCALES SYSTEMATICALLY FINGERED.

The fingering of double scales, as given in the various pianoforte schools, exhibits a remarkable amount of diversity, no two teachers agreeing entirely as to the fingering of all the scales, and no single one appearing to follow any definite and recognisable system throughout all the keys. This want of uniformity adds greatly to the difficulty of acquiring a fluent execution in scales of thirds and sixths, since, in addition to the large amount of practice they require, a very considerable time has to be devoted to the endeavour—not always successful—to commit to memory the fingering proper to each scale. It is probably on this account that the practice of this essential branch of pianoforte *technique* is frequently neglected by students.

The present system is designed to lessen the difficulties alluded to by establishing regular principles of fingering; at the same time giving the order in which the scales may be progressively and most advantageously studied. It is based upon the proposition that, since the right and left hands are the exact counterparts of each other, but reversed, so the fingering which is good for one hand must be good for the other, but in the reverse direction, the right hand executing ascending that which the left hand executes descending, and *vice versa*.

MAJOR SCALES. THIRDS AND SIXTHS.

The fingering of a right-hand scale having a given number of sharps corresponds to that of a left-hand scale having the same number of flats, and *vice versa*. For the fingering to be precisely similar, the hands must move in contrary directions. For example: If the following two scales are played together, the black and white keys will be found to follow each other in the same order, and the same fingering will be used in both hands.

Scale of G, one sharp, R. H.

Scale of F, one flat, L. H.

SCALES IN THIRDS.

The fingering of scales in thirds depends on the place of the little finger, which occurs once in each octave, accompanied by the 2nd finger; the remaining notes are played with $\frac{2}{3}$ and $\frac{3}{2}$ alternately.

- 2 **RULE** for R. H. SHARP and L. H. FLAT keys (as far as five sharps and five flats respectively):
The little finger falls on the fifth degree in the right hand, and on the sixth degree in the left.

Order in which the scales are to be studied.

N. B. Right-hand scales to begin ascending, with the thumb on the key-note; left-hand scales to begin descending, with the thumb on the third of the key.

Key.	Hand.	Little finger on
G	R	D 5 th degree
F	L	D 6 th "
D	R	A 5 th "
B ^b	L	G 6 th "
A	R	E 5 th "
E ^b	L	C 6 th "
E	R	B 5 th "
A ^b	L	F 6 th "
B	R	F [#] 5 th "
D ^b	L	B ^b 6 th "

The full notation of the above scales is as follows, but the student is strongly recommended to commit both rules and tables to memory, that the scales may be practised without book, and the full attention given to the position of the hands.

Scale of G. Right Hand.



Scale of F. Left Hand.



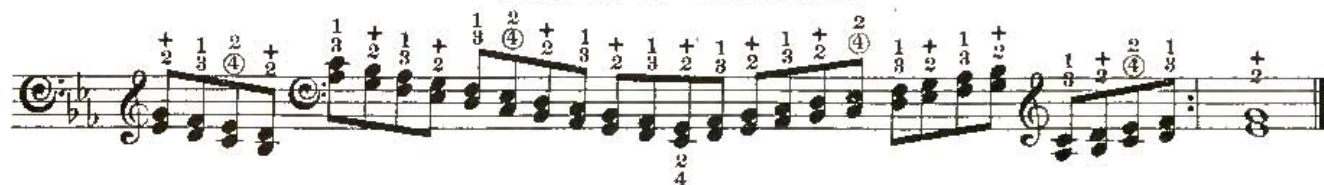
Scale of D. Right Hand.



Scale of B^b. Left Hand.



Scale of A. Right Hand.

Scale of E \flat . Left Hand.

Scale of E. Right Hand.

Scale of A \flat . Left Hand.

Scale of B. Right Hand.

Scale of D \flat . Left Hand.

In the above scales, the little finger may, if preferred, be used instead of the second, on the highest note in the right hand, and the lowest in the left.

RULE for R. H. FLAT and L. H. SHARP keys (as far as six flats and six sharps.)

The little finger falls on G in the right hand, and on A in the left.

Order of study.

Key.	Hand.	Little finger on
F	R	G
G	L	A
B \flat	R	G
D	L	A
E \flat	R	G
A	L	A
A \flat	R	G
E	L	A
D \flat	R	G \flat
B	L	A \sharp
G \sharp	R	G \sharp
F \sharp	L	A \sharp

Scale of F. Right Hand.



Scale of G. Left Hand.



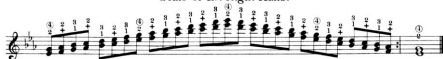
Scale of B \flat . Right Hand.



Scale of D. Left Hand.



Scale of E \flat . Right Hand.



Scale of A. Left Hand.



Scale of A \flat . Right Hand.

Scale of E. Left Hand.

Scale of D \flat . Right Hand.

Scale of B. Left Hand.

Scale of G \flat . Right Hand.

Scale of F \sharp . Left Hand.

In the scales of A \flat , R. H., and E, L. H., the little finger may, if preferred, be used instead of the second, on the highest note in the right hand, and the lowest in the left.

The scale of C having no black key, the place of the little finger is immaterial. It is usually made to fall on G in the right hand, and on C in the left.

Scale of C. Right Hand.

Scale of C. Left Hand.

SCALES IN SIXTHS.

The fingering of scales in sixths depends upon the place of the second finger, which occurs once in each octave, accompanied by the thumb; the remaining notes are played with $\frac{3}{4}$ and $\frac{4}{1}$ alternately.

RULE for R. H. SHARP and L. H. FLAT keys (as far as five sharps and five flats.)

The second finger falls on the sixth degree in the right hand, and on the fifth degree in the left.

Order of study.

N.B. Right-hand scales to begin descending, with the little finger on the key-note; left-hand scales to begin ascending, with the little finger on the third of the key.

Key.	Hand.	Second finger on
G	R	E 6 th degree
F	L	C 5 th "
D	R	B 6 th "
B \flat	L	F 5 th "
A	R	F \sharp 6 th "
E \flat	L	B \flat 5 th "
E	R	C \sharp 6 th "
A \flat	L	E \flat 5 th "
B	R	G \sharp 6 th "
D \flat	L	A \flat 5 th "

Scale of G. Right Hand.

Scale of F. Left Hand.

Scale of D. Right Hand.

Scale of B \flat . Left Hand.

Musical notation for the Scale of B \flat Left Hand. The scale is written on a bass clef staff with a key signature of two flats (B \flat and E \flat). It consists of two octaves of quarter notes, ascending and then descending. Fingerings are indicated by numbers 1-4, and accents are marked with '+' signs. Circled numbers 2 and 3 indicate specific fingering points.

Scale of A. Right Hand.

Musical notation for the Scale of A Right Hand. The scale is written on a treble clef staff with a key signature of three sharps (F#, C#, G#). It consists of two octaves of quarter notes, ascending and then descending. Fingerings are indicated by numbers 1-4, and accents are marked with '+' signs. Circled numbers 2 and 3 indicate specific fingering points.

Scale of E \flat . Left Hand.

Musical notation for the Scale of E \flat Left Hand. The scale is written on a bass clef staff with a key signature of three flats (B \flat , E \flat , and A \flat). It consists of two octaves of quarter notes, ascending and then descending. Fingerings are indicated by numbers 1-4, and accents are marked with '+' signs. Circled numbers 2 and 3 indicate specific fingering points.

Scale of E. Right Hand.

Musical notation for the Scale of E Right Hand. The scale is written on a treble clef staff with a key signature of one sharp (F#). It consists of two octaves of quarter notes, ascending and then descending. Fingerings are indicated by numbers 1-4, and accents are marked with '+' signs. Circled numbers 2 and 3 indicate specific fingering points.

Scale of A \flat . Left Hand.

Musical notation for the Scale of A \flat Left Hand. The scale is written on a bass clef staff with a key signature of three flats (B \flat , E \flat , and A \flat). It consists of two octaves of quarter notes, ascending and then descending. Fingerings are indicated by numbers 1-4, and accents are marked with '+' signs. Circled numbers 2 and 3 indicate specific fingering points.

Scale of B. Right Hand.

Musical notation for the Scale of B Right Hand. The scale is written on a treble clef staff with a key signature of two sharps (F# and C#). It consists of two octaves of quarter notes, ascending and then descending. Fingerings are indicated by numbers 1-4, and accents are marked with '+' signs. Circled numbers 2 and 3 indicate specific fingering points.

Scale of D \flat . Left Hand.

Musical notation for the Scale of D \flat Left Hand. The scale is written on a bass clef staff with a key signature of two flats (B \flat and E \flat). It consists of two octaves of quarter notes, ascending and then descending. Fingerings are indicated by numbers 1-4, and accents are marked with '+' signs. Circled numbers 2 and 3 indicate specific fingering points.

RULE for R. H. FLAT and L. H. SHARP keys (as far as six flats and six sharps.)

The second finger falls on A in the right hand, and on G in the left.

Order of study.

N.B. Right-hand scales to begin ascending, left-hand scales descending. Observe that the scales of E \flat and G \flat , R. H., and the corresponding scales of A and F \sharp , L. H., begin with the first and fourth fingers.

Key.	Hand.	Second finger on
F	R	A
G	L	G
B \flat	R	A
D	L	G
E \flat	R	A \flat
A	L	G \sharp
A \flat	R	A \flat
E	L	G \sharp
D \flat	R	A \flat
B	L	G \sharp
G \flat	R	A \flat
F \sharp	L	G \sharp

Scale of F. Right Hand.



Scale of G. Left Hand.



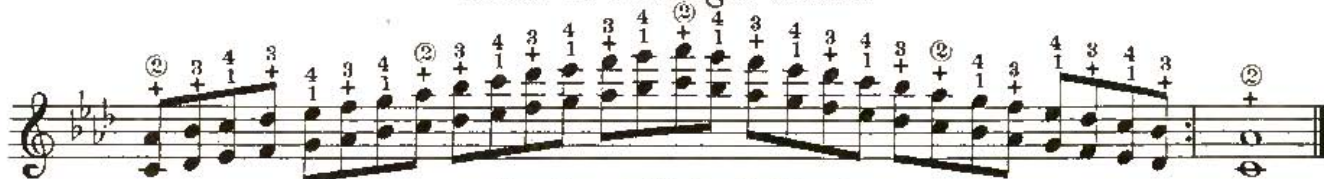
Scale of B \flat . Right Hand.



Scale of D. Left Hand.

Scale of E \flat . Right Hand.

Scale of A. Left Hand.

Scale of A \flat . Right Hand.

Scale of E. Left Hand.

Scale of D \flat . Right Hand.

Scale of B. Left Hand.

Scale of G \flat . Right Hand.

SCALES IN THIRDS.

To be practised first in harmonic, afterwards in melodic form.

Order of study.

Right Hand.

Key.	Little finger on
C	C <u>1st</u> degree
A	B <u>2nd</u> "
D	E " "
F	G " "
E♭	G <u>3rd</u> "
E	B <u>5th</u> "
G	D " "
B♭	C♭ <u>6th</u> "
B	A♯ <u>7th</u> "
F♯	E♯ " "
C♯	B♯ " "
G♯	F _x " "

Scale having the little finger on the First Degree.

C minor.



Scales having the little finger on the Second Degree.

A minor.



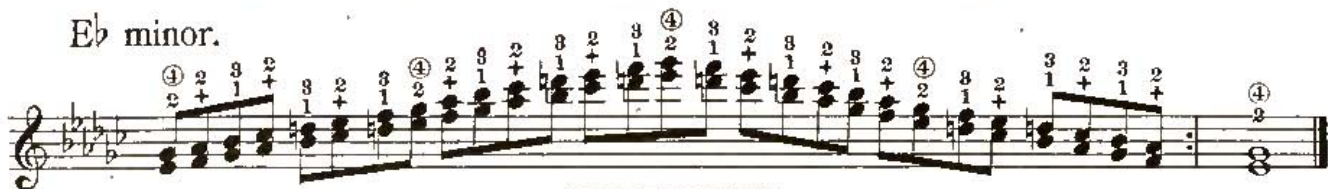
D minor.



F minor.

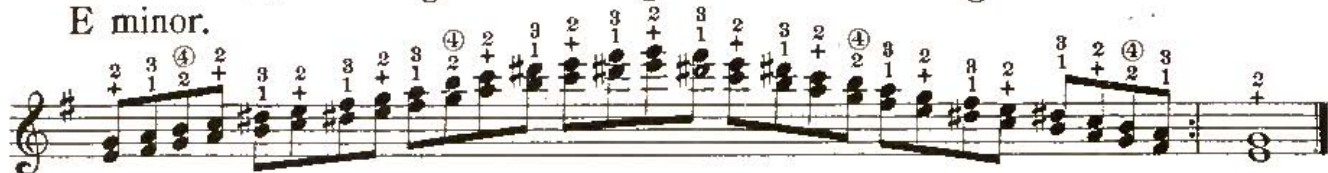


Scale having the little finger on the Third Degree.

E \flat minor.

Scales having the little finger on the Fifth Degree.

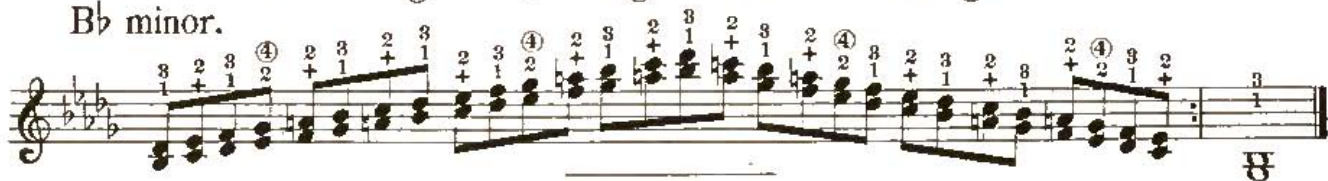
E minor.



G minor.



Scale having the little finger on the Sixth Degree.

B \flat minor.

Scales having the little finger on the Seventh Degree.

B minor.

F \sharp minor.C \sharp minor.G \sharp minor.

Left Hand.

Key.	Little finger on
D	D 1 st degree
G	G " "
C	C " "
F	F " "
B \flat	B \flat " "
F \sharp	A 3 rd "
A	D 4 th "
E	A " "
C \sharp	A 6 th "
G \sharp	E " "
E \flat	C \flat " "
B	A \sharp 7 th "

Scales having the little finger on the First Degree.

D minor.



G minor.



C minor.



F minor.



B♭ minor.



F♯ minor. Scale having the little finger on the Third Degree.



A minor. Scales having the little finger on the Fourth Degree.



E minor.



C♯ minor. Scales having the little finger on the Sixth Degree.



G# minor.

Musical notation for the G# minor scale. The scale is written in treble clef with a key signature of two sharps (F# and C#). The notes are G#, A, B, C, D, E, F#, G#. The notation includes ascending and descending lines with fingering numbers (1-4) and plus signs (+) indicating finger placement. The scale concludes with a double bar line and a repeat sign.

Eb minor.

Musical notation for the Eb minor scale. The scale is written in treble clef with a key signature of three flats (Bb, Eb, Ab). The notes are Eb, F, G, Ab, Bb, C, D, Eb. The notation includes ascending and descending lines with fingering numbers (1-4) and plus signs (+) indicating finger placement. The scale concludes with a double bar line and a repeat sign.

Scale having the little finger on the Seventh Degree.

B minor.

Musical notation for the B minor scale. The scale is written in treble clef with a key signature of two sharps (F# and C#). The notes are B, C, D, E, F#, G, A, B. The notation includes ascending and descending lines with fingering numbers (1-4) and plus signs (+) indicating finger placement. The scale concludes with a double bar line and a repeat sign.

In order to play the above scales in the melodic form, it will be necessary to raise the sixth degree as well as the seventh in ascending, and to lower both degrees, so that they agree with the signature, in descending. The same fingering is available for both forms. The following examples will be a sufficient indication of the method of proceeding.

Scale of C minor. Right Hand. Melodic Form.

Musical notation for the C minor scale, right hand, melodic form. The scale is written in treble clef with a key signature of three flats (F, C, G). The notes are C, D, Eb, E, F, G, Ab, A, Bb, B, C. The notation includes ascending and descending lines with fingering numbers (1-4) and plus signs (+) indicating finger placement. The scale concludes with a double bar line and a repeat sign.

Scale of D minor. Left Hand. Melodic Form.

Musical notation for the D minor scale, left hand, melodic form. The scale is written in bass clef with a key signature of two flats (Bb, Eb). The notes are D, Eb, F, G, Ab, Bb, C, D. The notation includes ascending and descending lines with fingering numbers (1-4) and plus signs (+) indicating finger placement. The scale concludes with a double bar line and a repeat sign.

SCALES IN SIXTHS.

Order of study.

Right Hand.

Key.	Second finger on
E	E 1 st degree
B	B " "
F#	F# " "
C#	C# " "
G#	G# " "
E♭	E♭ " "
F	A♭ 3 rd "
B♭	D♭ " "
A	F 6 th "
D	B " "
G	E " "
C	A♭ " "

Scales having the second finger on the First Degree.

E minor.

B minor.

F# minor.

C# minor.

G# minor.

E \flat minor.

Musical notation for the E \flat minor scale. The scale is written on a treble clef staff with a key signature of three flats (B \flat , E \flat , A \flat). The notes are: E \flat , F, G, A \flat , B \flat , C, D, E \flat . The notation includes various fingering numbers (1, 2, 3, 4) and plus signs (+) indicating fingerings for both ascending and descending directions. A circled '2' is placed above the second degree (F) in both directions.

Scales having the second finger on the Third Degree.

F minor.

Musical notation for the F minor scale. The scale is written on a treble clef staff with a key signature of two flats (B \flat , E \flat). The notes are: F, G, A \flat , B \flat , C, D, E \flat , F. The notation includes various fingering numbers (1, 2, 3, 4) and plus signs (+). A circled '2' is placed above the second degree (G) in both directions.

B \flat minor.

Musical notation for the B \flat minor scale. The scale is written on a treble clef staff with a key signature of three flats (B \flat , E \flat , A \flat). The notes are: B \flat , C, D, E \flat , F, G, A \flat , B \flat . The notation includes various fingering numbers (1, 2, 3, 4) and plus signs (+). A circled '2' is placed above the second degree (C) in both directions.

Scales having the second finger on the Sixth Degree.

A minor.

Musical notation for the A minor scale. The scale is written on a treble clef staff with a key signature of no sharps or flats. The notes are: A, B, C, D, E, F, G, A. The notation includes various fingering numbers (1, 2, 3, 4) and plus signs (+). A circled '2' is placed above the sixth degree (F) in both directions.

D minor.

Musical notation for the D minor scale. The scale is written on a treble clef staff with a key signature of two flats (B \flat , E \flat). The notes are: D, E, F, G, A, B, C, D. The notation includes various fingering numbers (1, 2, 3, 4) and plus signs (+). A circled '2' is placed above the sixth degree (B) in both directions.

G minor.

Musical notation for the G minor scale. The scale is written on a treble clef staff with a key signature of one flat (F \flat). The notes are: G, A, B, C, D, E, F, G. The notation includes various fingering numbers (1, 2, 3, 4) and plus signs (+). A circled '2' is placed above the sixth degree (E) in both directions.

C minor.

Musical notation for the C minor scale. The scale is written on a treble clef staff with a key signature of three flats (B \flat , E \flat , A \flat). The notes are: C, D, E \flat , F, G, A \flat , B \flat , C. The notation includes various fingering numbers (1, 2, 3, 4) and plus signs (+). A circled '2' is placed above the sixth degree (A \flat) in both directions.

Left Hand.

Key.	Second finger on
A	A 1 st degree
E	E " "
F#	G# 2 nd "
F	A 3 rd "
Bb	Db " "
C#	G# 5 th "
G#	D# " "
Eb	Bb " "
C	A 6 th "
B	G# " "
D	C# 7 th "
G	F# " "

Scales having the second finger on the First Degree.

A minor.



E minor.



Scale having the second finger on the second Degree.

F# minor.



Scales having the second finger on the Third Degree.

F minor.



Bb minor.



Scales having the second finger on the Fifth Degree.

C# minor.

Musical notation for the C# minor scale. The scale is written on a treble clef staff with a key signature of two sharps (F# and C#). The notes are C#4, D5, E5, F#5, G5, A5, B5, C#6. The fingering is: C# (1), D (3), E (2), F# (1), G (4), A (3), B (4), C# (2). The scale is shown in both ascending and descending directions.

G# minor.

Musical notation for the G# minor scale. The scale is written on a treble clef staff with a key signature of three sharps (F#, C#, and G#). The notes are G#4, A4, B4, C#5, D5, E5, F#5, G#6. The fingering is: G# (1), A (3), B (2), C# (1), D (4), E (3), F# (4), G# (2). The scale is shown in both ascending and descending directions.

Eb minor.

Musical notation for the Eb minor scale. The scale is written on a treble clef staff with a key signature of three flats (Bb, Eb, and Ab). The notes are Eb4, Fb4, Gb4, Ab4, Bb4, C5, Db5, Eb6. The fingering is: Eb (1), Fb (3), Gb (2), Ab (1), Bb (4), C (3), Db (4), Eb (2). The scale is shown in both ascending and descending directions.

Scales having the second finger on the Sixth Degree.

C minor.

Musical notation for the C minor scale. The scale is written on a treble clef staff with a key signature of one flat (F). The notes are C4, D4, Eb4, F4, G4, Ab4, Bb4, C5. The fingering is: C (1), D (3), Eb (2), F (1), G (4), Ab (3), Bb (4), C (2). The scale is shown in both ascending and descending directions.

B minor.

Musical notation for the B minor scale. The scale is written on a treble clef staff with a key signature of two sharps (F# and C#). The notes are B4, C5, D5, E5, F#5, G5, A5, B6. The fingering is: B (1), C (3), D (2), E (1), F# (4), G (3), A (4), B (2). The scale is shown in both ascending and descending directions.

Scales having the second finger on the Seventh Degree.

D minor.

Musical notation for the D minor scale. The scale is written on a treble clef staff with a key signature of two flats (Bb and Eb). The notes are D4, Eb4, F4, G4, Ab4, Bb4, C5, D5. The fingering is: D (1), Eb (3), F (2), G (1), Ab (4), Bb (3), C (4), D (2). The scale is shown in both ascending and descending directions.

G minor.

Musical notation for the G minor scale. The scale is written on a treble clef staff with a key signature of one flat (F). The notes are G4, Ab4, Bb4, C5, D5, Eb5, F5, G6. The fingering is: G (1), Ab (3), Bb (2), C (1), D (4), Eb (3), F (4), G (2). The scale is shown in both ascending and descending directions.

Scales in sixths may also be played in melodic form, with the same fingering.

CHROMATIC SCALES.

Chromatic scales of double notes are played in minor and major thirds, perfect and augmented fourths (or diminished fifths), minor and major sixths, and in octaves. They are all formed by combining certain single scales, which have to be practised separately at first. These separate scales are as follows.

SCALE N^o 1. Played with the 2nd 3rd and 4th fingers. RULE. The 4th finger is used on F and C in the right hand and on E and B in the left.

Right Hand.



Left Hand.



SCALE N^o 2. Played with the thumb and 1st finger. RULE. The thumb is used twice, on consecutive white keys.

Right Hand.



Left Hand.



SCALE N^o 3. Played with the 3rd and 4th fingers. RULE. The 4th finger is used twice, on consecutive white keys.

Right Hand.



Left Hand.



SCALE N^o 4. Played with the 2nd 3rd and 4th fingers. RULE. The 2nd finger is used on C[#] and G[#] in the right hand, and on E^b and A^b in the left.

Right Hand.

Left Hand.

SCALE N^o 5. Played with the 2nd 3rd and 4th fingers. RULE. The 2nd finger is used on B^b and E^b in the right hand, and on D^b and G^b in the left.

Right Hand.

Left Hand.

The different combinations of these scales are made as follows.

The scale in Minor Thirds employs Scales 1 and 2.

Right Hand.

Left Hand.

The scale in Major Thirds employs Scales 1 and 2.

Right Hand.

Scale I. 8
Scale II. ⊕

Left Hand.

Scale II. ⊕
Scale I. 8

The scale in Perfect Fourths employs Scales 1 and 2.

Right Hand.

Scale I. ④
Scale II. ⊕

Left Hand.

Scale II. ⊕
Scale I. ④

Left Hand.

Scale II. ⊕
Scale V. 8

The scale in Minor Sixths employs Scales 2 and 3.

Right Hand.

Scale III. ④
Scale II. ⊕

Left Hand.

Scale II. ⊕
Scale III. ④

The scale in Major Sixths employs Scales 2 and 4.

Right Hand.

Scale IV. ④
Scale II. ⊕

Left Hand.

Scale II. 1
Scale IV. 4



MT
231
T28

Taylor, Franklin
Double scales

BC 725

UNIVERSITY OF TORONTO

EDWARD JOHNSON
MUSIC LIBRARY

NOVELLO, EWER & CO.'S MUSIC PRIMERS

EDITED BY
SIR JOHN STAINER.

In issuing this series of Music Primers the Editor sees with pleasure the realisation of a desire he has long felt, to place in the hands of teachers and students of music a set of educational works of a high standard at a price so low as to render them attainable by all.

The growing interest in music generally, and rapid spread of its study, so very evident in this country, render it of the utmost importance that the student's first steps in every branch should be directed with skill and based on sound principles. The Editor has kept this object steadily in view, and he believes that each one of these Primers will prove to be as carefully constructed in detail as it is comprehensive in design.

Such a result would have been impossible but for the hearty support and sympathy of those authors, men of known ability in their special branches of art, who have embodied the results of their long and valuable experience in their respective contributions.

While gratefully acknowledging the kindness of these gentlemen, the Editor cannot but express a hope that the Primers may prove as useful to the public, and as beneficial to art, as both authors and publishers have endeavoured to make them.

		s.	d.
1.	THE PIANOFORTE - - - - E. PAUER	2	0
2.	THE RUDIMENTS OF MUSIC - - - W. H. CUMMINGS	1	0
3.	THE ORGAN - - - - SIR JOHN STAINER	2	0
4.	THE HARMONIUM - - - - KING HALL	2	0
5.	SINGING (<i>Paper Boards, 5s.</i>) - - - A. RANDEGGER	4	0
6.	SPEECH IN SONG (<i>Singer's Pronouncing Primer</i>) A. J. ELLIS, F.R.S.	2	0
7.	MUSICAL FORMS - - - - E. PAUER	2	0
8.	HARMONY - - - - SIR JOHN STAINER	2	0
9.	COUNTERPOINT - - - - DR. BRIDGE	2	0
10.	FUGUE - - - - JAMES HIGGS	2	0
11.	SCIENTIFIC BASIS OF MUSIC - - - DR. STONE	1	0
12.	DOUBLE COUNTERPOINT - - - DR. BRIDGE	2	0
13.	CHURCH CHOIR TRAINING - - - REV. J. TROUTBECK	1	0
14.	PLAIN SONG - - - - REV. T. HELMORE	2	0
15.	INSTRUMENTATION - - - - E. PROUT	2	0
16.	THE ELEMENTS OF THE BEAUTIFUL IN MUSIC - E. PAUER	1	0
17.	THE VIOLIN - - - - BERTHOLD TOURS	2	0
18.	TONIC SOL-FA - - - - J. CURWEN	1	0
19.	LANCASHIRE SOL-FA - - - JAMES GREENWOOD	1	0
20.	COMPOSITION - - - - SIR JOHN STAINER	2	0
21.	MUSICAL TERMS - - - - STAINER AND BARRETT	1	0
22.	THE VIOLONCELLO - - - - JULES DE SWERT	2	0
23.	TWO-PART EXERCISES (395) - - - JAMES GREENWOOD	1	0
24.	DOUBLE SCALES - - - - FRANKLIN TAYLOR	1	0
25.	MUSICAL EXPRESSION - - - - MATHIS LUSSY	3	0
26.	SOLFEGGI (<i>Paper Boards, 5s.</i>) - FLORENCE A. MARSHALL	4	0
	<i>Or, in Three Parts, 1s. 6d. each.</i>		
27.	ORGAN ACCOMPANIMENT - - - DR. BRIDGE	2	0
28.	THE CORNET - - - - H. BRETT	2	0
29.	MUSICAL DICTATION - - - DR. RITTER	1	0

(TO BE CONTINUED.)

Any of the above may be had strongly bound in boards, price 6d. each extra.