

Allice Cornwell
Allice Cornwell



“Come Home, Father.”

SONG AND CHORUS.

WORDS AND MUSIC BY

HENRY CLAY WORK.



CHICAGO:

Published by **ROOT & CADY, 67 Washington St.**

"COME HOME, FATHER!"

'TIS THE
SONG OF LITTLE MARY,
*Standing at the bar-room door,
While the shameful midnight revel
Rages wildly as before.*

Words and Music by **HENRY C. WORK**

No. 26.

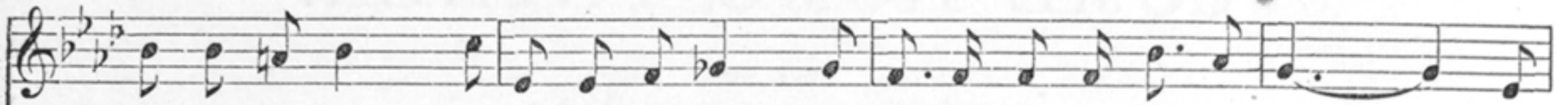
PIANO.

Handwritten annotations: 3, 1, 3, 1

Handwritten annotations: 1 +, 3, 1, 3, 4, 3

1. Fa-ther, dear fa-ther, come home with me now! The clock in the stee-ple strikes one; You
2. Fa-ther, dear fa-ther, come home with me now! The clock in the stee-ple strikes two; The
3. Fa-ther, dear fa-ther, come home with me now! The clock in the stee-ple strikes three; The

said you were com-ing right home from the shop, As soon as your day's work was done. Our
night has grown cold-er, and Ben - ny is worse— But he has been call - ing for you. In-
house is so lone-ly—the hours are so long For poor weeping moth - er and me. Yes,



fire has gone out— our house is all dark— And mother's been watching since tea, With
 deed he is worse— Ma says he will die, Per - haps be - fore morning shall dawn; And
 we are a - lone— poor Ben - ny is dead, And gone with the an - gels of light; And



poor brother Ben - ny so sick in her arms, And no one to help her but me. Come
 this is the message she sent me to bring—"Come quickly, or he will be gone." Come
 these were the ver - y last words that he said— "I want to kiss Pa - pa good night." Come



home! come home! come home! Please, fa - ther, dear fa - ther, come home.
 home! come home! come home! Please, fa - ther, dear fa - ther, come home
 home! come home! come home! Please, fa - ther, dear fa - ther, come home.



CHORUS.

Unless each part can be represented, it will be better to omit the Chorus. The Song is complete without it.

Air.

Musical staff for Soprano part, featuring a treble clef, a key signature of three flats (B-flat, E-flat, A-flat), and a 4/4 time signature. The melody begins with a half note G4, followed by quarter notes A4, B-flat4, and C5, then a half note D5. The lyrics 'Hear the sweet voice of the child..... Which the night-winds re - peat as they roam!..... Oh' are written below the staff.

Hear the sweet voice of the child..... Which the night-winds re - peat as they roam!..... Oh

Alto.

Musical staff for Alto part, featuring a treble clef, a key signature of three flats, and a 4/4 time signature. The melody begins with a half note G4, followed by quarter notes A4, B-flat4, and C5, then a half note D5. The lyrics 'Hear the sweet voice of the child..... Which the night-winds re - peat as they roam!..... Oh' are written below the staff.

Hear the sweet voice of the child..... Which the night-winds re - peat as they roam!..... Oh

Tenor.

Musical staff for Tenor part, featuring a treble clef, a key signature of three flats, and a 4/4 time signature. The melody begins with a half note G4, followed by quarter notes A4, B-flat4, and C5, then a half note D5. The lyrics 'Hear the sweet voice of the child..... Which the night-winds re - peat as they roam!..... Oh' are written below the staff.

Bass.

Musical staff for Bass part, featuring a bass clef, a key signature of three flats, and a 4/4 time signature. The melody begins with a half note G3, followed by quarter notes A3, B-flat3, and C4, then a half note D4. The lyrics 'Hear the sweet voice of the child..... Which the night-winds re - peat as they roam!..... Oh' are written below the staff.

Piano accompaniment for the first system, consisting of two staves (treble and bass clefs) with a grand staff bracket. The right hand plays a series of ascending eighth notes, while the left hand provides a steady harmonic accompaniment with quarter notes.

Musical staff for Soprano part, featuring a treble clef, a key signature of three flats, and a 4/4 time signature. The melody begins with a half note G4, followed by quarter notes A4, B-flat4, and C5, then a half note D5. The lyrics 'who could re - sist this most plaintive of prayers? "Please, fa - ther, dear fa - ther, come home!"' are written below the staff.

who could re - sist this most plaintive of prayers? "Please, fa - ther, dear fa - ther, come home!"

Musical staff for Alto part, featuring a treble clef, a key signature of three flats, and a 4/4 time signature. The melody begins with a half note G4, followed by quarter notes A4, B-flat4, and C5, then a half note D5. The lyrics 'who could re - sist this most plaintive of prayers? "Please, fa - ther, dear fa - ther, come home!"' are written below the staff.

Musical staff for Tenor part, featuring a treble clef, a key signature of three flats, and a 4/4 time signature. The melody begins with a half note G4, followed by quarter notes A4, B-flat4, and C5, then a half note D5. The lyrics 'who could re - sist this most plaintive of prayers? "Please, fa - ther, dear fa - ther, come home!"' are written below the staff.

who could re - sist this most plaintive of prayers? "Please, fa - ther, dear fa - ther, come home!"

Musical staff for Bass part, featuring a bass clef, a key signature of three flats, and a 4/4 time signature. The melody begins with a half note G3, followed by quarter notes A3, B-flat3, and C4, then a half note D4. The lyrics 'who could re - sist this most plaintive of prayers? "Please, fa - ther, dear fa - ther, come home!"' are written below the staff.

Piano accompaniment for the second system, consisting of two staves (treble and bass clefs) with a grand staff bracket. The right hand plays a series of ascending eighth notes, while the left hand provides a steady harmonic accompaniment with quarter notes.